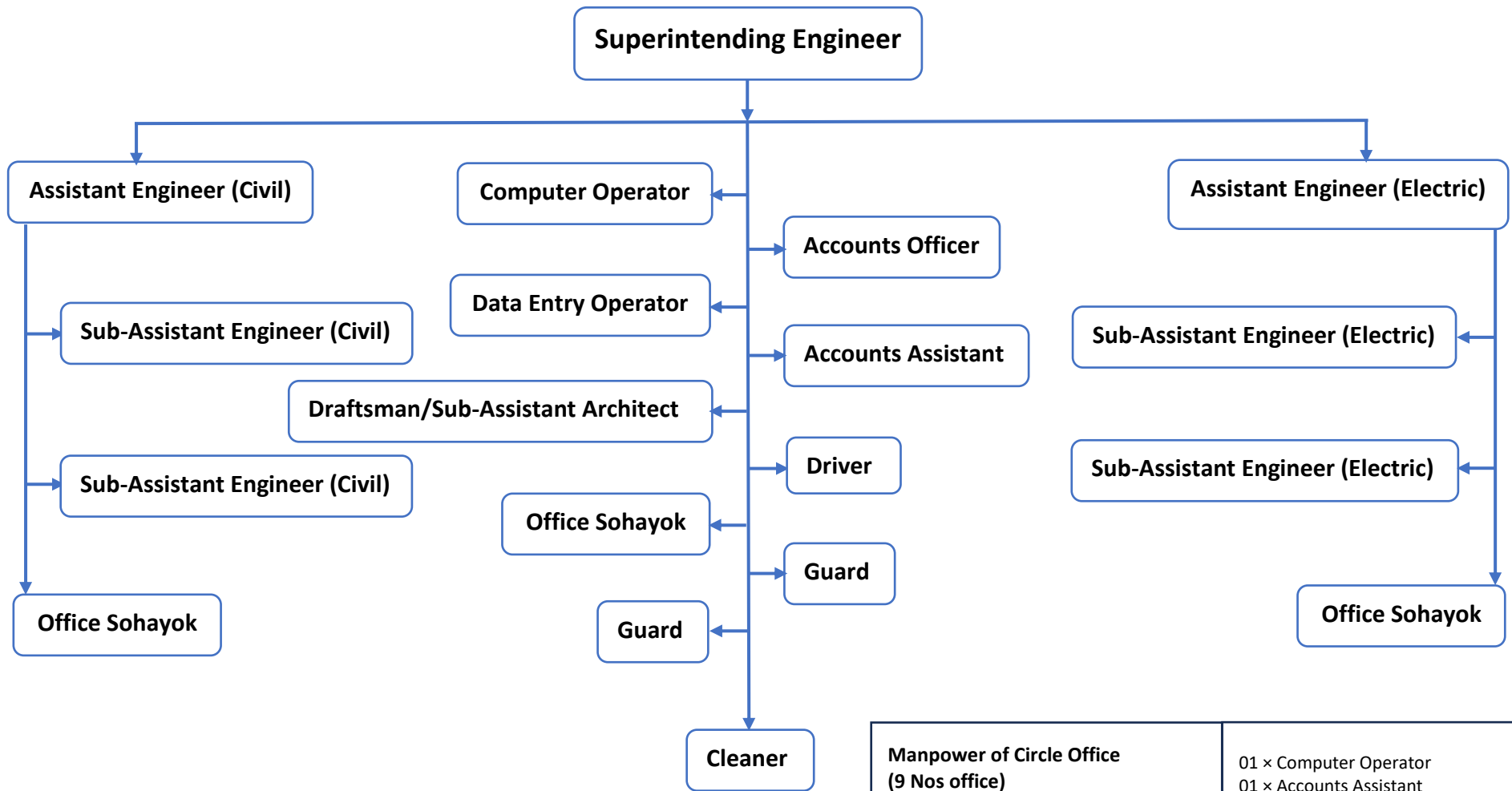


# Organogram of Circle Office Education Engineering Department (EED)



<p><b>Manpower of Circle Office (9 Nos office)</b></p> <p>01 × Superintending Engineer          01 × Assistant Engineer (Civil)          01 × Assistant Engineer (Electric)          01 × Accounts Officer          02 × Sub-Assistant Engineer (Civil)          02 × Sub-Assistant Engineer (Electric)          01 × Draftsman/Sub-Assistant Architect</p>	<p>01 × Computer Operator          01 × Accounts Assistant          01 × Data Entry Operator          01 × Driver          03 × Office Sohayok          02 × Guard          01 × Cleaner</p> <hr/> <p>19 Nos</p>
---	--